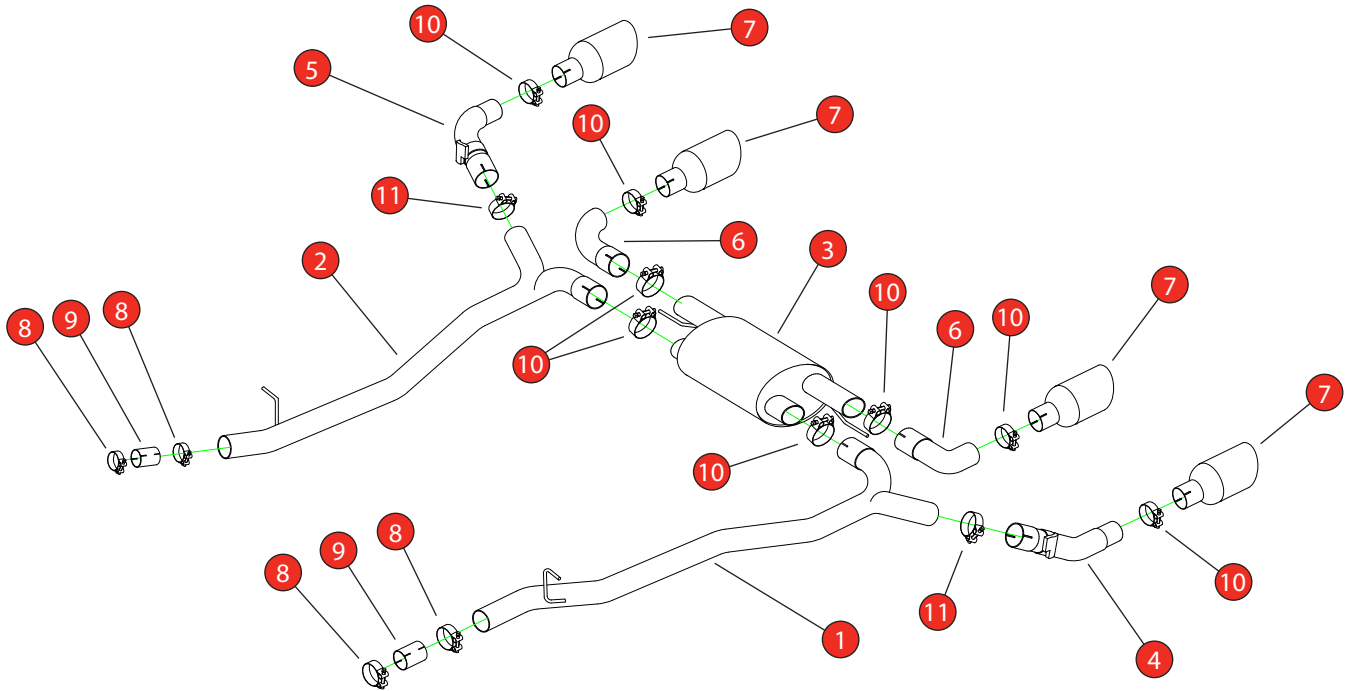


Car	BMW M5 F90 Pre & Post LCI, Incl Comp.	Part No.	SBM114CF
Year	2017-2020	Fit Kits	519FK
Notes	Where not supplied use original fittings. Original system requires cutting, unless fitting with Scorpion GPF -Delete.	Features	Pipe Diameter:- 80mm

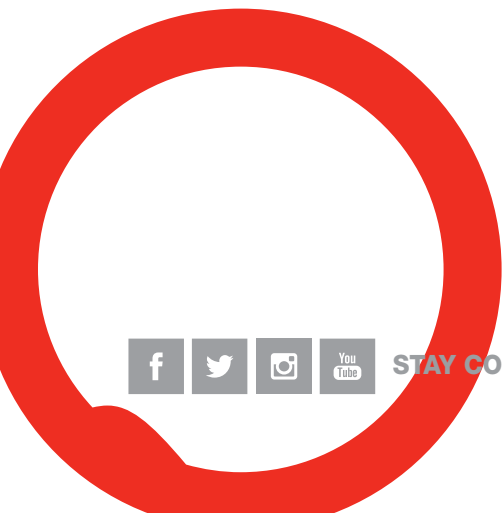
Estimated Fitting Time: 2 Hours



NO.	PART NO.	DESCRIPTION	QTY
1	1020BM	L/H Rear Link Pipe	1
2	1021BM	R/H Rear Link Pipe	1
3	1022BM	Rear Silencer	1
4	1023BM	L/H Valved Trim Bend	1
5	1024BM	R/H Valved Trim Bend	1
6	1025BM	Inner Trim Bend	1
7	Z023.10055	100mm Carbon Fibre Ascari Trims	4
Fit Kit			
8	Z016.10069	79-85mm Clamp	4
9	AD129	Adaptor	2
10	Z016.10064	63-68mm HD Clamp	8
11	Z016.10055	68-73mm Clamp	2

DATE	15/10/2025
ISSUE	00
AUTHORISED	G O'Shea

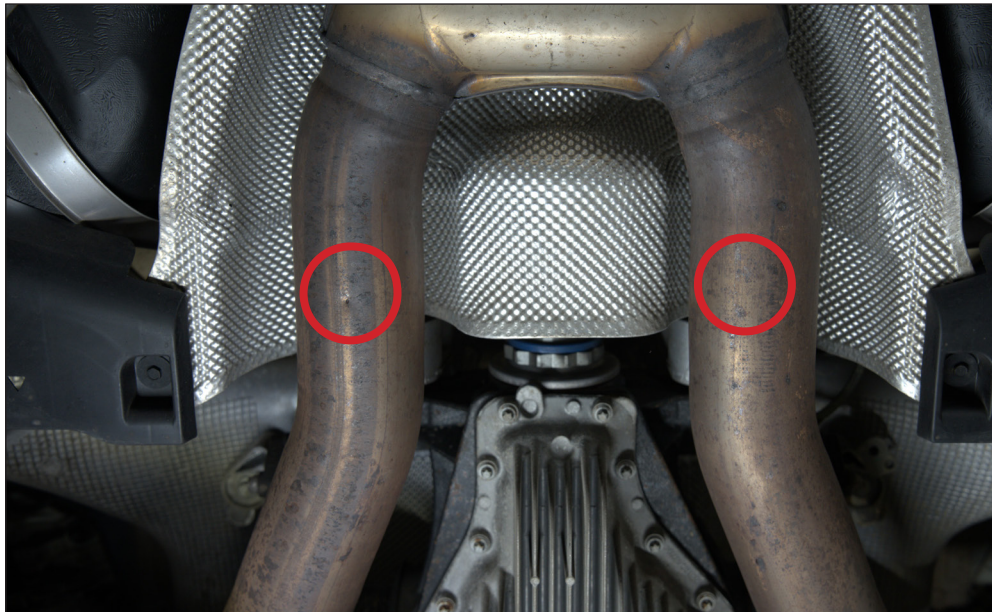
NOTE: ENSURE SCORPION SYSTEM IS CLEAR OF MOVING PARTS AND ALL ORIGINAL FUNCTIONS WORK CORRECTLY.



STAY CONNECTED TO RED POWER.

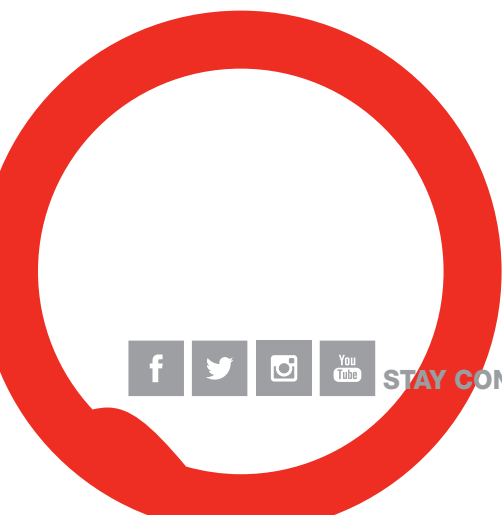
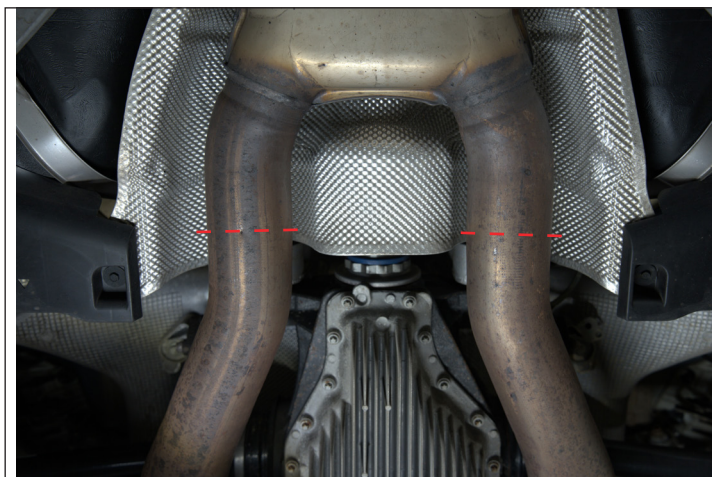
Car	BMW M5 F90 Pre & Post LCI, Incl Comp.	Part No.	SBM114CF
Year	2017-2020	Fit Kits	519FK
Notes	Where not supplied use original fittings. Original system requires cutting, unless fitting with Scorpion GPF -Delete.	Features	Pipe Diameter:- 80mm

Estimated Fitting Time: 2 Hours



Cutting Instructions:

The original system requires cutting in two places at the rear diff. (Unless fitting at the same time as the Scorpion GPF-Delete). There is a dimple on each pipe, cut at that point and clean up the edges.



STAY CONNECTED TO RED POWER.